



- mx1**
- mx2**
- mx3**
- mx4**
- mx5**
- mx1c**
- mx2c**
- mxs**

MX Series



IAG House, Sovereign Court, Ermine Business Park, Huntingdon, Cambs, PE29 6XU,UK
 Tel: +44(0)1480 447700 Fax: +44(0)1480 431767 <http://www.mission.co.uk>
 IAG reserve the right to alter design and specification without notice. All rights reserved © IAG Group Ltd.
 Mission is a member of the International Audio Group. CODE: MH10-MNL0001



Cautions Before installing this product read all these instructions.

Clean only with dry cloth.

When making any connections, switch the amplifier off.

When you switch on your system or change sources, set the volume control at minimum and turn the level up gradually.

DO NOT use your amplifier at full volume.

Avoid extreme settings of tone controls or graphic equalisers. Ideally, they should be set 'flat' or, if possible, bypassed. Ensure that all loudspeakers in the system are correctly wired and are in phase.

DO NOT subject your loudspeakers to excessive cold, heat, humidity or sunlight.

DO NOT install near any heat sources such as radiators, heat registers, stoves, or other apparatus (including amplifiers) that produce heat.

The apparatus must not be exposed to dripping or splashing and no objects filled with liquids, such as vases, should be placed on the apparatus.

DO NOT connect your loudspeakers to the mains supply, except for subwoofers.

DO NOT attempt to dismantle the loudspeaker. There are no user serviceable parts inside and you will render the warranty void.

Site hi-fi electronics away from the loudspeakers on a rigid stand or cabinet.

Loudspeakers should not be placed directly facing other hi-fi units, or share the same shelf or cabinet.

Site conventional speakers and subwoofers at least 0.5m away from TV sets, computers etc. Some manufacturers forbid the placing of objects on top of their TV sets. Check your TV handbook before installing the centre speaker directly on your TV set. Consult your TV dealer if you are in any doubt.

Only use attachments/accessories specified by the manufacturer.

Use only with the cart, stand, tripod, bracket, or table specified by the manufacturer, or sold with the apparatus. When a cart is used, use caution when moving the cart/apparatus combination to avoid injury from tip-over.



Warning

When an amplifier is driven beyond its power output capabilities it will produce distorted results which will quickly damage your speakers by overheating. Make sure that your amplifier is not left unattended when playing, for example at parties, and turn the volume control down at the first sign of audible distortion.



Warning

When connecting your loudspeakers do not run the cables across open floor spaces where they can cause a hazard. Route the cables safely around room boundaries if necessary.

Warranty Conditions

The warranty card enclosed should be completed and returned to Mission or its Distributor within 8 days of purchase.

No Dealer or Distributor may vary the terms of this warranty which is personal to the original purchaser and is not transferable.

Please retain the sales receipt as proof of purchase.

Warranty claims must wherever possible be made through the Dealer from whom the equipment was purchased.

This warranty excludes:

Damage caused through neglect, accident, misuse, wear and tear, or through incorrect installation, adjustment or repair by

unauthorised personnel. Any unauthorised servicing will result in loss of warranty.

Liability for damage or loss occurring in transit to or from the purchaser.

Consequent damage, loss or injury, arising from or in conjunction with this equipment.

Equipment for attention under warranty should be considered return carriage paid. If equipment is found to comply with the published specification, Mission reserves the right to raise a charge.

The above conditions do not affect your statutory rights as a consumer.

Product Service

Should a fault occur with your loudspeakers please return them as a pair, even if only one unit appears to be faulty. Please pack them correctly, using the original packing.

Product for service should be returned to the appointed dealer from whom you purchased the product. If you experience difficulties or there is no Mission dealer in your area, contact the Mission distributor for your country or the Main Service Centre for your region.

For technical support, servicing or product queries and information please contact either your local retailer or the offices below.

UK: IAG Service Centre, Unit 4 St Margaret's Way, Stukeley Meadows Industrial Estate, Huntingdon, Cambs PE29 6EB; England.
Tel: +44 (0)1480 452561 Fax: +44 (0)1480 413403

Welcome to Mission!

The **MX** Series is the latest in a long line of distinguished Mission loudspeakers. These technologically advanced loudspeakers will complement the finest electronics and décor. Bass drivers with our own purpose-designed cones and precision engineered motor systems and advanced pressure-balanced tweeters are used throughout the range. All our loudspeaker drive units are manufactured in our factory using the latest precision tooling. High purity gold-plated binding posts feature on all models. Your Mission **MX** speakers will bring you great listening pleasure for many years.

General Information

Please read these instructions carefully before installing your loudspeakers. A few minutes studying this manual will ensure superb performance from your loudspeaker for many years.

Please pay attention to all cautions printed on the pages marked with this symbol.



Unpacking Your Loudspeakers

- Carefully unpack each loudspeaker.
- Retain all the packing materials so that your loudspeaker can be repacked and shipped without damage.
- If you dispose of the packing, do so with regard to all recycling provisions in your area.

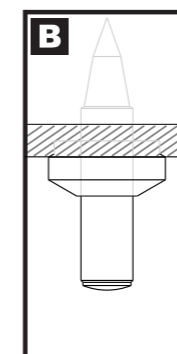
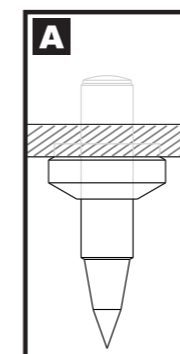
Preparing Your Loudspeakers

- The Mission **MX-3**, **MX-4** and **MX-5** floorstanding models require fitting with the included plinth and spikes before use. Use the screws provided to secure the plinths to the base of the speakers. Make sure that the screws are fully tightened.
- After unpacking, the other loudspeakers need no further preparation.

Fitting Spikes (MX-3, MX-4, MX-5)



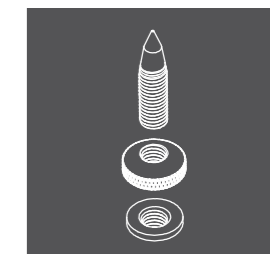
Warning: Be careful. Loudspeaker spikes are very sharp. Keep well away from children and pets during assembly. When positioning the speakers avoid piercing electrical cables or objects that may be under floor coverings, etc.



The spikes are reversible. Orient them as shown in Fig A for carpet, etc. and as shown in B for stone and wood floors, etc.

Invert the loudspeaker and place the top on a towel or soft cloth to protect the surface.

Screw a threaded collar on each spike. Screw a spike half way into each spike retainer fitted in the base of the cabinet. Tighten the collar finger tight onto the spike retainer.



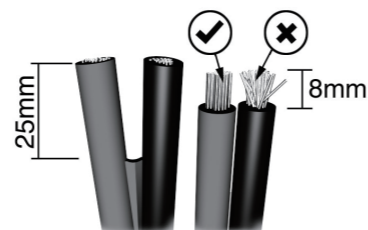
Carefully return the loudspeaker to its normal position. Ensure that spikes do not pierce cables etc. under the carpet.

Adjusting the Spikes

- Loosen each collar slightly. Adjust the height by screwing in or out one or more of the spikes until the loudspeaker is stable and level. Tighten the collar fully onto the loudspeaker base.

Connecting your Loudspeakers

Loudspeaker cable is polarity coded along one edge. Split the cable to a depth of about 25mm and strip 8mm of insulation from each wire. If the cable is stranded, twist the strands together.

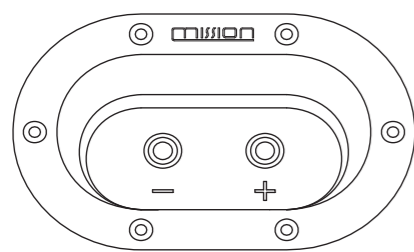


Terminal Panels

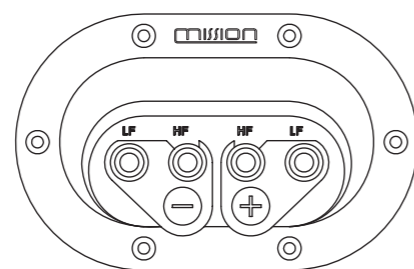
Mission MX centre and surround loudspeakers use a twin terminal connection panel.

The conventional loudspeakers use a four terminal panel which can be bi-wired for improved performance. The HF terminals connect to the treble section of the speaker and the LF terminals to the bass. As supplied, the treble and bass terminal pairs are connected via removable metal straps. These should be removed for bi-wiring installations.

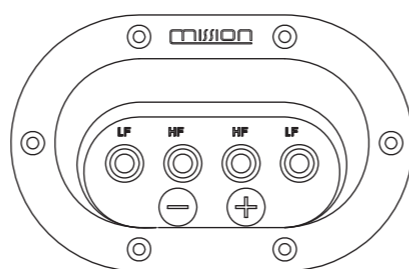
MX-C1, MX-C2 MX-S Terminal Panel



MX-1 - MX-5 Panel (Standard Wiring)



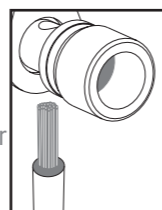
MX-1 - MX-5 Panel (Bi-Wiring)



Connecting Loudspeakers:

Unscrew the terminal. Thread the bare end of the cable through the cross-hole ensuring there are no loose strands. Tighten securely.

Connect the red, positive (+) terminal of the Left loudspeaker to the corresponding red, positive (+) amplifier terminal. Connect the black, negative (-) terminals similarly. Repeat for the Right Channel.



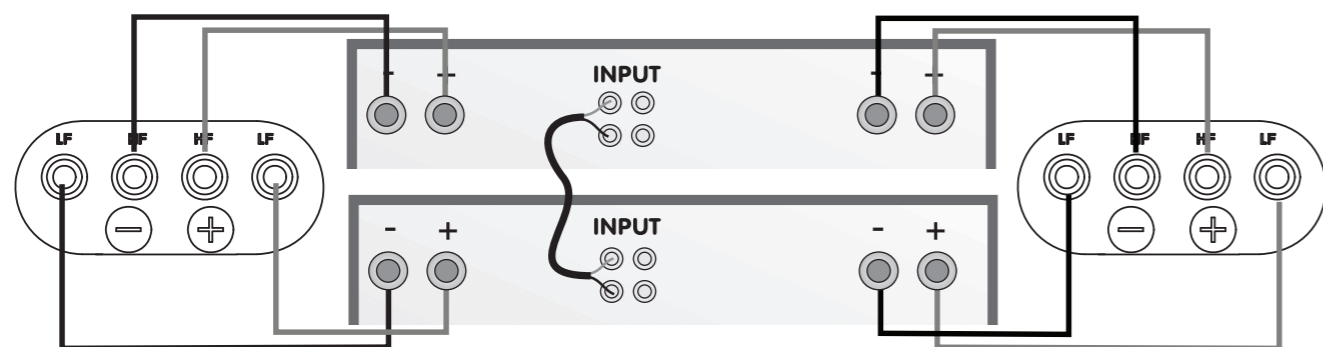
Standard and Bi-Wired Connections



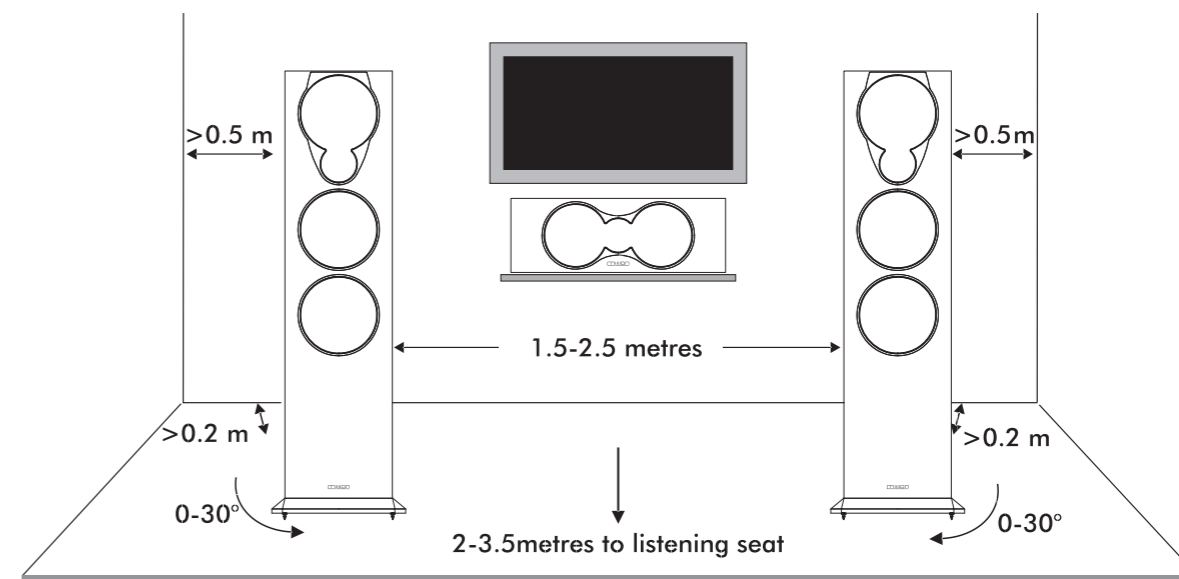
In the illustration above the Right Loudspeaker is shown with standard connections and the Left loudspeaker is bi-wired. Bi-wiring consists of running one pair of cables from the amplifier to the bass terminals and another pair to the treble terminals of the loudspeaker. When a loudspeaker is bi-wired, bass performance, dynamic range and clarity of sound are all optimised. Effects speakers handle a more limited range of frequencies and so bi-wiring is unnecessary.

Bi-Amping

By using separate amplifiers for LF and HF drive units you can further improve performance. This is known as bi-amping. Note that the amplifier inputs are linked.



Positioning your Loudspeakers



Floor Standing and Bookshelf Loudspeakers

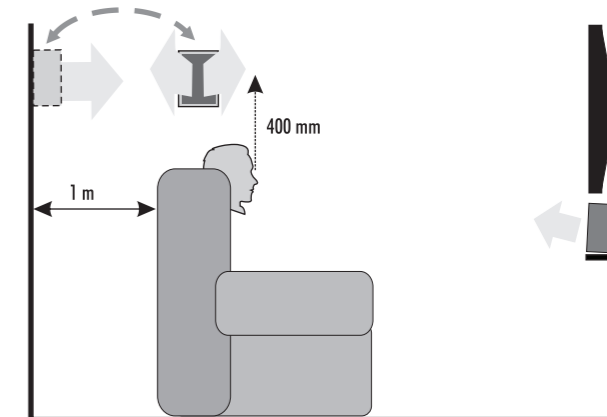
Mission MX-3, MX-4 and MX-5 loudspeakers should be placed on the floor (ideally on spikes). Mission MX-1 and MX-2 should be mounted on rigid stands, ideally spike coupled to the floor.

Height is important: a stand should place the top of a speaker at ear level to a seated listener. Shelf or bracket mounting is second best. The distance from the wall can profoundly affect loudspeakers' sonic performance. If your speakers are too close to the wall the bass will boom and sound coloured. Moving them into the room may increase clarity but tends to reduce bass output. When positioned correctly, the high frequency response is smooth with well-defined, powerful bass. Start with the speakers about 300mm from the wall and 1.8 metres apart. The distance from each loudspeaker to the side wall should be at least 500mm. Vary the distance between the two loudspeakers and the distance from the wall until you get a perfect stereo stage.

Centre and Surround Loudspeakers

Your MX-C1 and MX-C2 Centre loudspeakers should be sited on top of the TV monitor, or on a shelf in a console below the TV set. If you place the unit directly on top of the TV, ensure that the TV can stand the weight and the assembly is stable. Check your TV handbook or consult your TV dealer if you are in any doubt. If the centre speaker is below head height, place two small blocks under the unit at the front to angle it slightly up.

The surround speakers should be placed above and behind the listening seat. They may be stand or bracket mounted on the side walls or on the rear walls but always behind the listener. Do not operate them within 450mm of a TV screen.



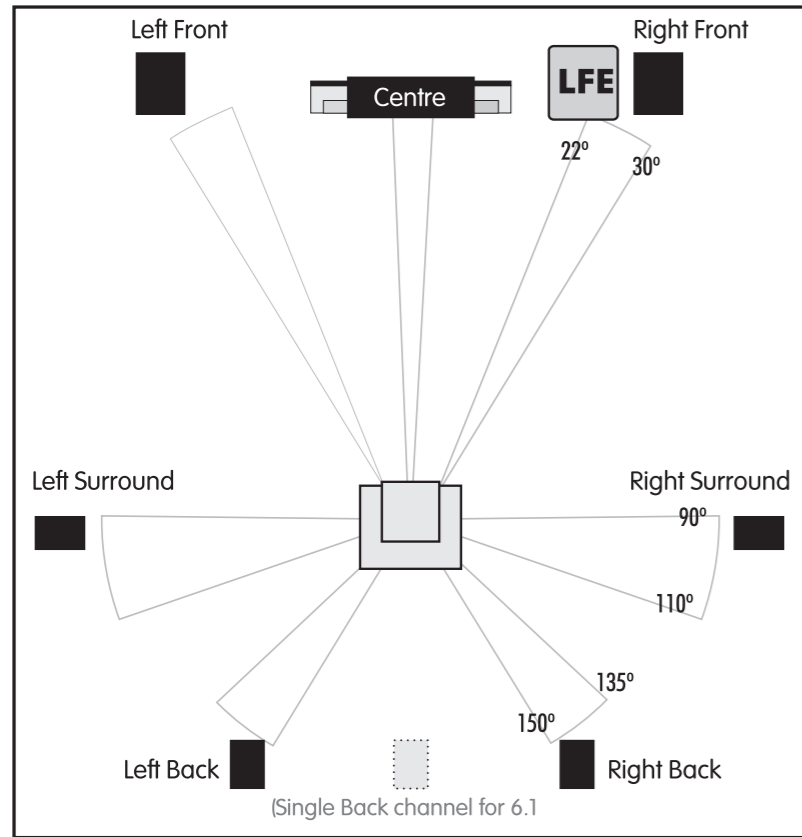
Tuning and Phase

Phase: To check loudspeaker phase, check the polarity of your speaker wire at the terminals of the loudspeakers and at the loudspeaker terminals of the amplifier. The conductor colour codes should always be connected the same way round. If your loudspeakers are connected correctly, you hear a full sound with clean midrange and deep and powerful bass.

Fine Tuning: All the loudspeakers are reflex enclosures. Although these will not normally be needed, foam port bungs are provided which may be used to alter the bass parameters and damp resonances, especially when operating the loudspeakers next to walls etc. Place a bung in each speaker port and adjust them in and out as needed.

Home Theatre Topics

Dolby Labs Recommended Multi-Channel Loudspeaker Positions



Loudspeaker Positioning

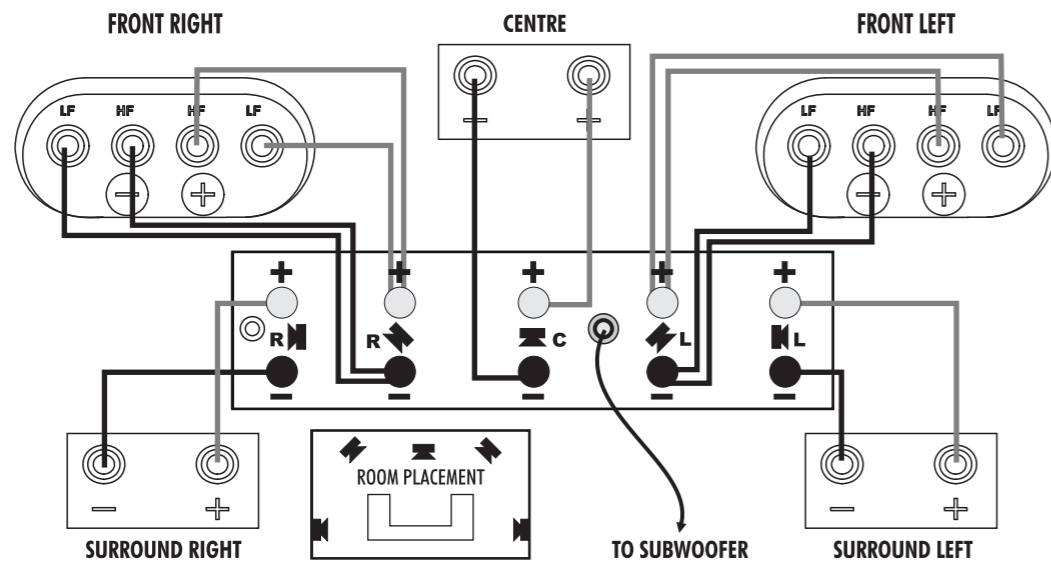
Front Loudspeakers: The front loudspeakers are placed on either side of the TV monitor, 2 to 3 metres apart. The speakers should be angled slightly so they are aimed towards the listeners.

Rear Surround Channels: We recommend placing the speakers in a high position, behind the listeners head. If the rear wall is more than 1 metre behind the listening seat, an alternative position is on the side walls. If the walls are a long way from the listening seat, consider stand mounting the loudspeakers.

Centre Channel: Most of the dialogue comes from the centre loudspeaker. Speech should appear to originate from the actors mouths. Operating height is important. Ideally the front and centre channel speakers should be at the same height. The front of the cabinet should be level with the TV screen.

5.1 System Connections

The Front Left and Front Right Channels are Bi-wired to provide the best fidelity. All effects speakers use standard wiring.



Setting Speaker Sizes

When used with a subwoofer, Digital AV processors usually require you to set the size of the loudspeakers for good bass management. This is usually 'Large' or 'Small'. With the exception of the **MX-4** and **MX-5** all the loudspeakers should be set to "Small". Depending on the performance of your subwoofer you may set the **MX-4** either to 'Large' or 'Small'.

Distance and Level Adjustments

Most AV processors have adjustments to allow you to set the sound levels of the loudspeakers to be the same in all channels and to compensate for the different distances between the various loudspeakers and the listening seat. These parameters should be adjusted with care as the final result will depend to a large extent on the care with which you set the system up.

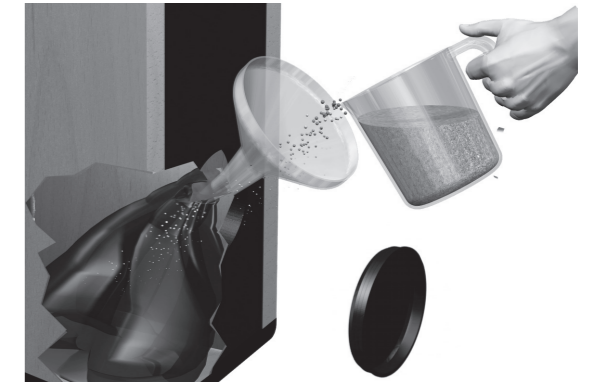
Optional Sand Filling

Sand Filling: The bases of the **MX-3** and **MX-4** may optionally be sand-filled to improve stability and bass response.

Make sure you use PERFECTLY DRY sharp sand - play sand is suitable - builder's sand is NOT suitable.

Remove the plastic cover. Procure a stout plastic bag such as a builder's rubble bag. Insert the bag into the loudspeaker base and fill the bag three-quarters full. Seal the bag with twist grip wire (or tie a knot in it) and push the bag into the base.

Replace the cover when you have finished.



Loudspeaker Maintenance

Use a cloth to clean your cabinets and, very occasionally, a slightly dampened cloth to remove finger marks etc. Although the grilles may be removed, these speakers have been voiced to sound at their best with the grilles on. We do not advocate removal of the grilles: if necessary clean grilles carefully in place with a soft brush.

Specifications

Standard Loudspeakers	MX-1	MX-2	MX-3	MX-4	MX-5
Format	Stand/Shelf	Stand/Shelf	Floorstanding	Floorstanding	Floorstanding
Enclosure Type	2-way reflex	2-way reflex	2-way reflex	2-way reflex	3-way reflex
Driver Units					
bass	-	-	-	-	2x6"(165mm)
bass/mid	5"(130mm)	6"(165mm)	2x5"(130mm)	2x6"(165mm)	6"(165mm)
tweeter	25mm	25mm	25mm	25mm	25mm
Magnetic Shielding	NO	NO	NO	NO	NO
Crossover Frequencies	3kHz	2.3kHz	2kHz	2kHz	200Hz, 2kHz
Frequency Response +/-3dB	58Hz - 20kHz	52Hz - 20kHz	48Hz - 20kHz	44Hz - 20kHz	40Hz - 20kHz
Sensitivity SPL/M @ 2.83V	86dB	87dB	89dB	90dB	90dB
Volume Litres	12.4	21.7	32.9	50.0	88.1
Nominal Impedance	8 ohms	8 ohms	8 ohms	8 ohms	8 ohms
Minimum Impedance	4.2 ohms	4.4 ohms	4.2 ohms	3.2 ohms	3.2 ohms
Recommended Amplifier	25 - 100W	25 - 100W	25 - 150W	25 - 150W	25 - 200W
Package quantity	1PAIR	1PAIR	1PCS	1PCS	1PCS
Dimensions (H x W x D)	280x172x258 mm	340x206x310 mm	815x172x340 mm	935x206x360 mm	995x250x390 mm
Height on feet/spikes	-	-	865mm	985mm	1050mm
Net Weight	5.1 kg each	7.7 kg each	19.2 kg each	23.7 kg each	28.3 kg each
Gross Weight	12.4kg	18kg	22.1kg	28.2kg	37.1kg

Effects Loudspeakers	MX-S	MX-C1	MX-C2
Format	Surround	Centre Channel	Centre Channel
Enclosure Type	2-way reflex	2-way reflex	2-way reflex
Driver Units			
bass	-	-	-
bass/mid	4"(100mm)	2x4"(100mm)	2x5"(130mm)
tweeter	1"(25mm)	25mm	25mm
Magnetic Shielding	NO	YES	YES
Crossover Frequencies	2.3kHz	2.3kHz	2kHz
Frequency Response +/-3dB	75Hz - 20kHz	75Hz - 20kHz	56Hz - 20kHz
Sensitivity SPL/M @ 2.83V	85dB	87dB	89dB
Volume Litres	7.4	11.7	20.6
Nominal Impedance	8 ohms	8 ohms	8 ohms
Minimum Impedance	4.2 ohms	5.3 ohms	4.4 ohms
Recommended Amplifier	25 - 100W	25 - 100W	25 - 150W
Package quantity	1PAIR	1PCS	1PCS
Dimensions (H x W x D)	240x146x210 mm	146x420x190 mm	172x500x240 mm
Height on feet/spikes	-	-	-
Net Weight	3.6 kg each	5.6 kg each	8.9 kg each
Gross Weight	8.24kg	6.83kg	10.2kg

Warning: When an amplifier is driven beyond its power output capabilities it will produce distorted results which will quickly damage your speakers by overheating. Make sure that your amplifier is not left unattended when playing, for example at parties, and turn the volume control down at the first sign of audible distortion. Playing music at extremely high volumes for extended periods can permanently damage your hearing. Mission reserve the right to alter specifications where necessary - E&OE.